

Structural Activity and Volume–Price Interpretation Powered by the QIM Framework.

Date: 13-04-2026

Version: 1.0

Global Indices Insights

This dashboard presents comparative volume–price behavior across major global indices. It highlights structural activity, liquidity pressure, and relative momentum for contextual interpretation. All values are derived from the QIM Framework and do not represent trading signals.

Indices Covered:

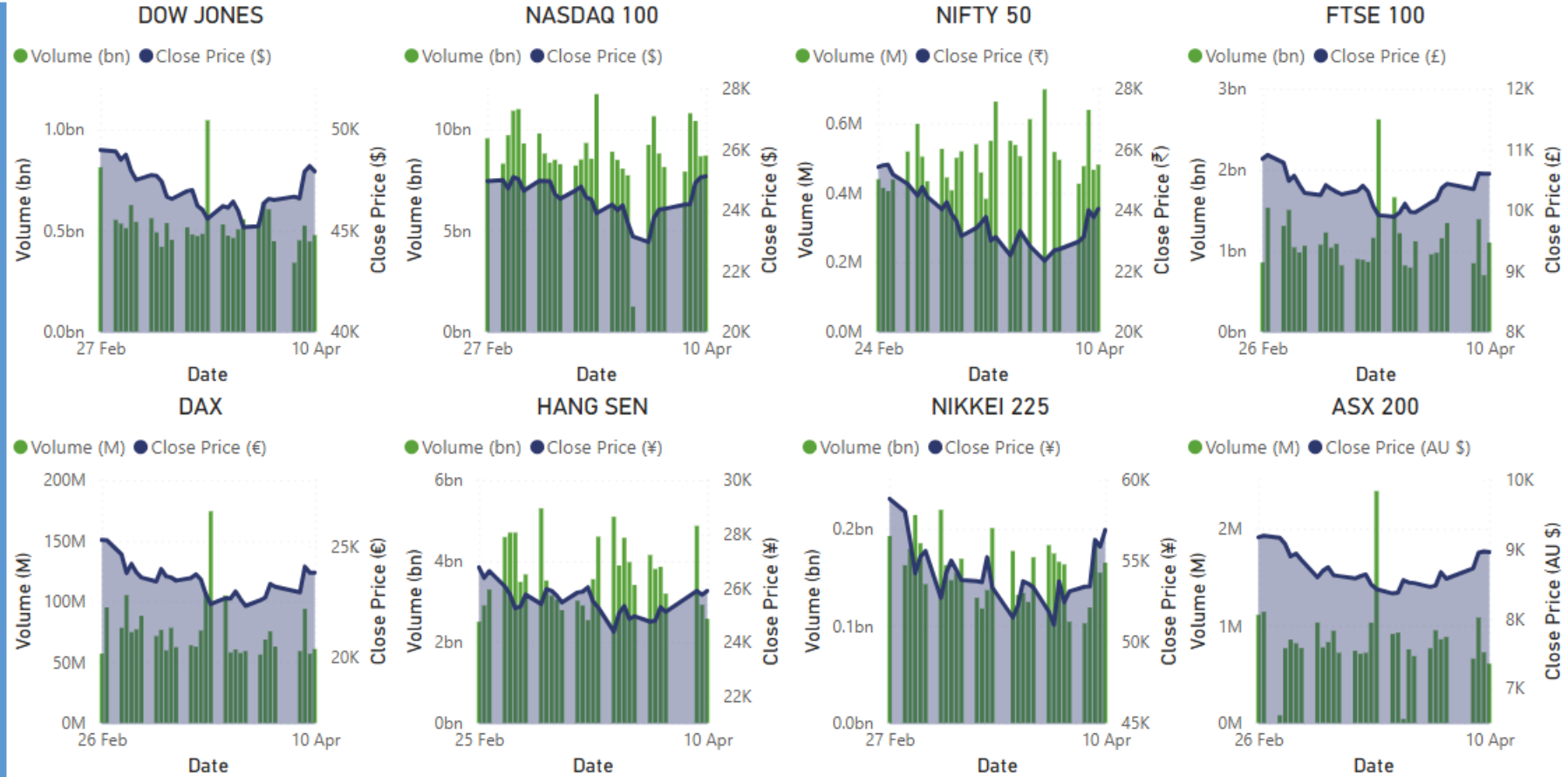
- Dow Jones
- Nasdaq 100
- Nifty 50
- FTSE 100
- DAX
- Hang Seng
- Nikkei 225
- ASX 200

Purpose:

To provide a unified structural view of global market behavior for informed, non-directional interpretation.

Global Indices Dashboard

Structural Activity and Volume–Price Interpretation Powered by the QIM Framework



© 2026 QIM Framework — Structural-Behavioral Interpretation for Research Use

“Powered by QIM — Structural-Behavioral Framework for Market Interpretation”

© 2026 QIM Framework. All rights reserved.

Structural-behavioral analytics for independent interpretation.

Date: 13-04-2026

Version: 1.0

Insights

This dashboard presents structural boundaries, emotional pressure, and behavioral displacement for contextual interpretation of the Dow Jones index. It integrates volume-price behavior, swing dynamics, pivot structure, and upside-downside displacement derived from the QIM Framework. All values are structural outputs and do not represent trading signals.

Purpose:

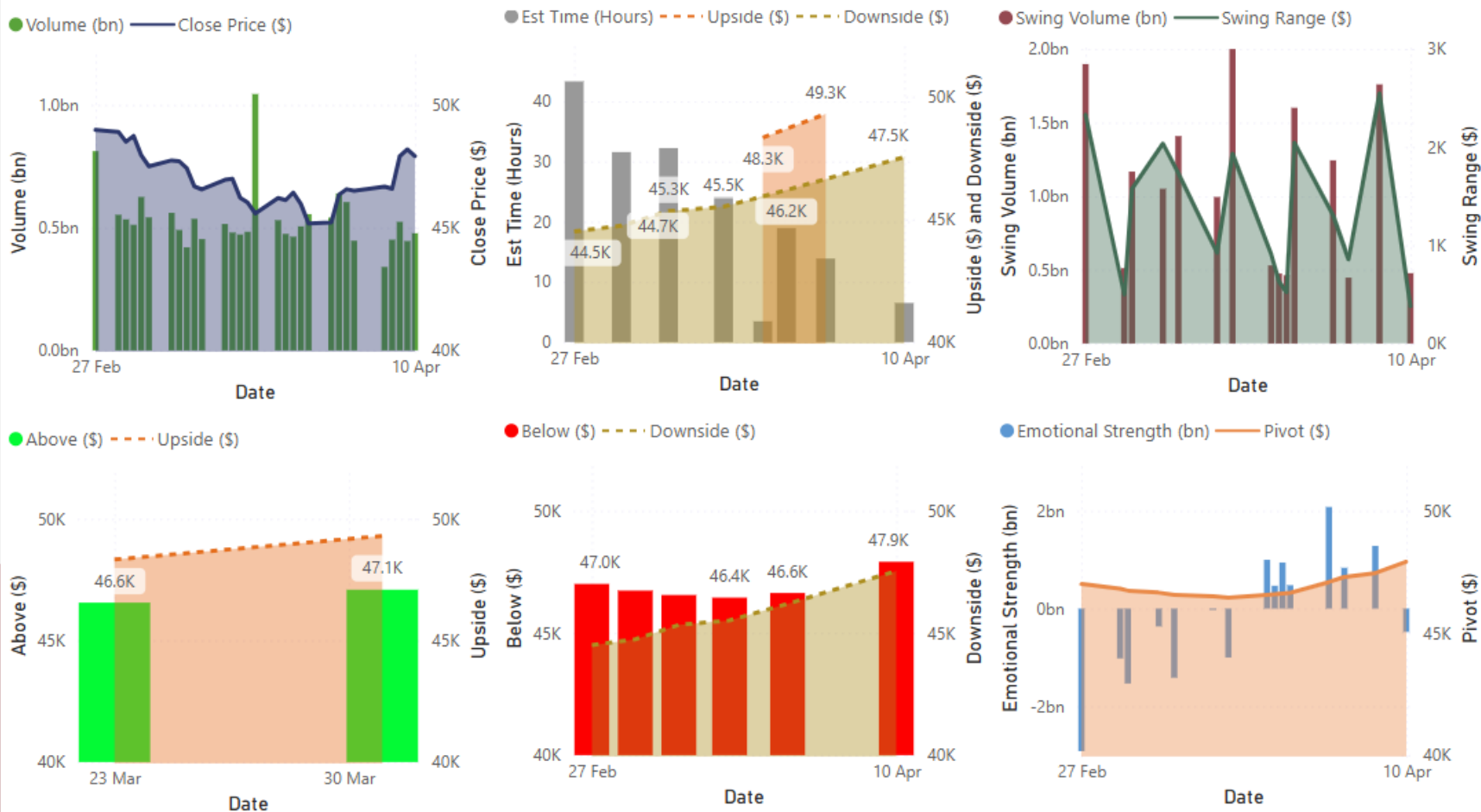
To provide a clear, non-directional structural view of Dow Jones behavior for informed interpretation.

Disclaimer

All values shown are structural-behavioral outputs derived from the QIM Framework for research use only. This dashboard does not provide trading signals, investment advice, or market predictions.

Dow Jones Projections Dashboard

Structural-Behavioral Metrics and Volume-Price Interpretation Powered by the QIM Framework



© 2026 QIM Framework — Structural-Behavioral Interpretation for Research Use

“Powered by QIM — Structural-Behavioral Framework for Market Interpretation”

© 2026 QIM Framework. All rights reserved.

Structural-behavioral analytics for independent interpretation.

Date: 13-04-2026

Version: 1.0

Nasdaq 100 Projections Dashboard

Structural-Behavioral Metrics and Volume-Price Interpretation Powered by the QIM Framework

Insights

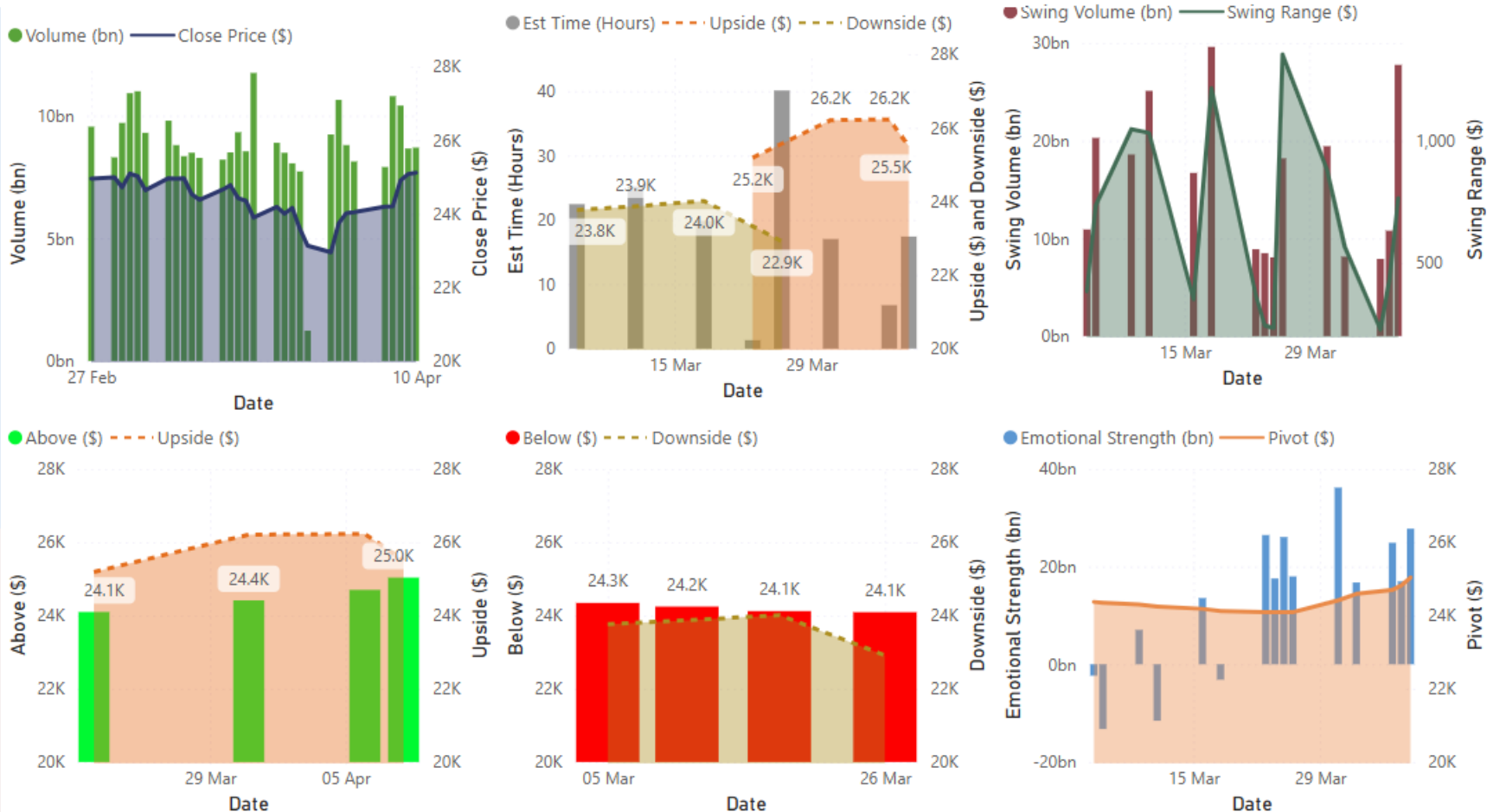
This dashboard presents structural boundaries, emotional pressure, and behavioral displacement for contextual interpretation of the Nasdaq 100 index. It integrates volume-price behavior, swing dynamics, pivot structure, and upside-downside displacement derived from the QIM Framework. All values are structural outputs and do not represent trading signals.

Purpose:

To provide a clear, non-directional structural view of Nasdaq 100 behavior for informed interpretation.

Disclaimer

All values shown are structural-behavioral outputs derived from the QIM Framework for research use only. This dashboard does not provide trading signals, investment advice, or market predictions.



© 2026 QIM Framework — Structural-Behavioral Interpretation for Research Use

“Powered by QIM — Structural-Behavioral Framework for Market Interpretation”

© 2026 QIM Framework. All rights reserved.

Structural-behavioral analytics for independent interpretation.

Date: 13-04-2026

Version: 1.0

Insights

This dashboard presents structural boundaries, emotional pressure, and behavioral displacement for contextual interpretation of the Nifty 50 index. It integrates volume-price behavior, swing dynamics, pivot structure, and upside-downside displacement derived from the QIM Framework.

All values are structural outputs and do not represent trading signals.

Purpose:

To provide a clear, non-directional structural view of Nifty 50 behavior for informed interpretation.

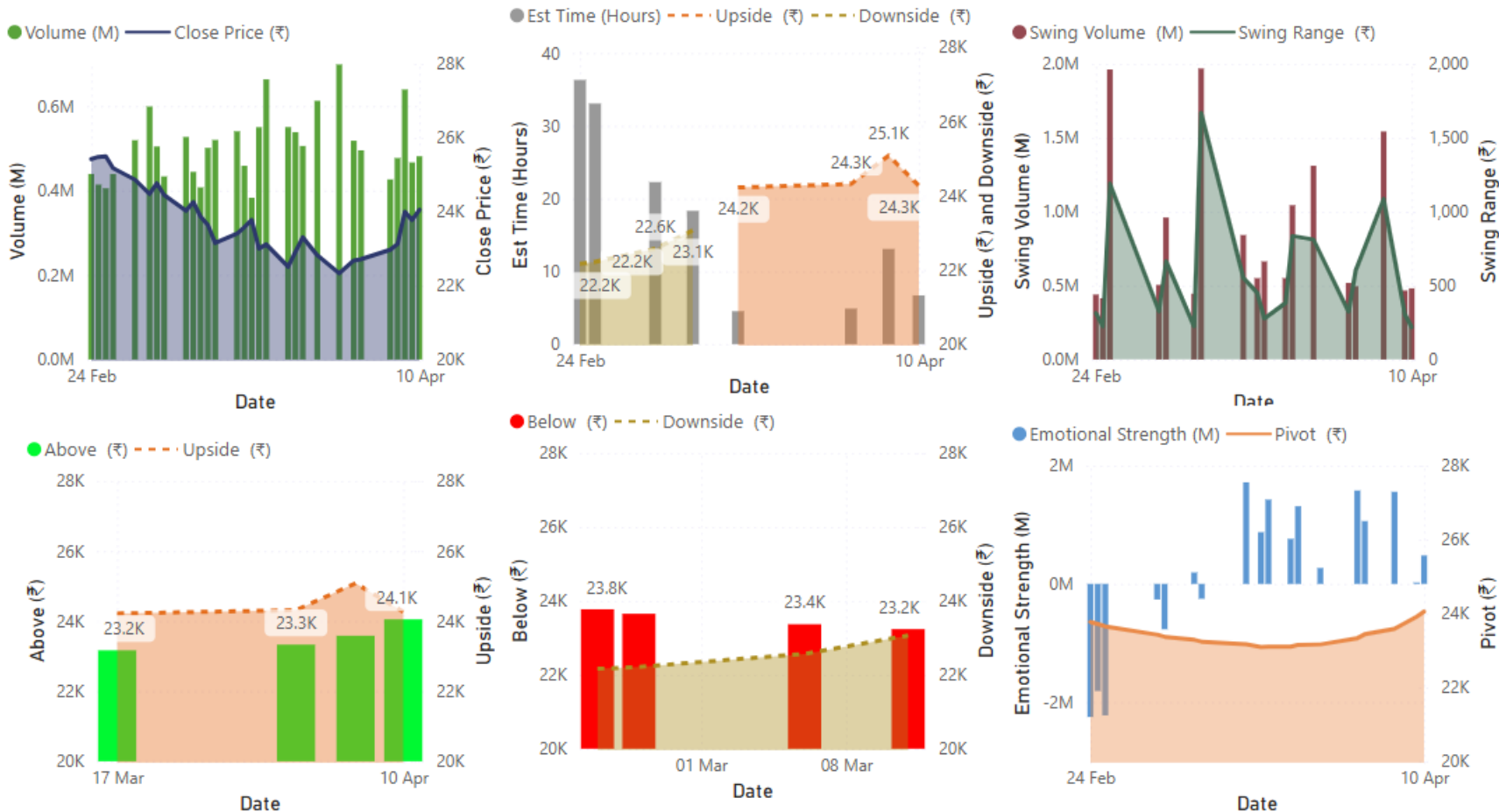
Disclaimer

All values shown are structural-behavioral outputs derived from the QIM Framework for research use only.

This dashboard does not provide trading signals, investment advice, or market predictions.

Nifty 50 Projections Dashboard

Structural-Behavioral Metrics and Volume-Price Interpretation Powered by the QIM Framework



© 2026 QIM Framework — Structural-Behavioral Interpretation for Research Use

“Powered by QIM — Structural-Behavioral Framework for Market Interpretation”

© 2026 QIM Framework. All rights reserved.

Structural-behavioral analytics for independent interpretation.

Date: 13-04-2026

Version: 1.0

FTSE 100 Projections Dashboard

Structural-Behavioral Metrics and Volume-Price Interpretation Powered by the QIM Framework

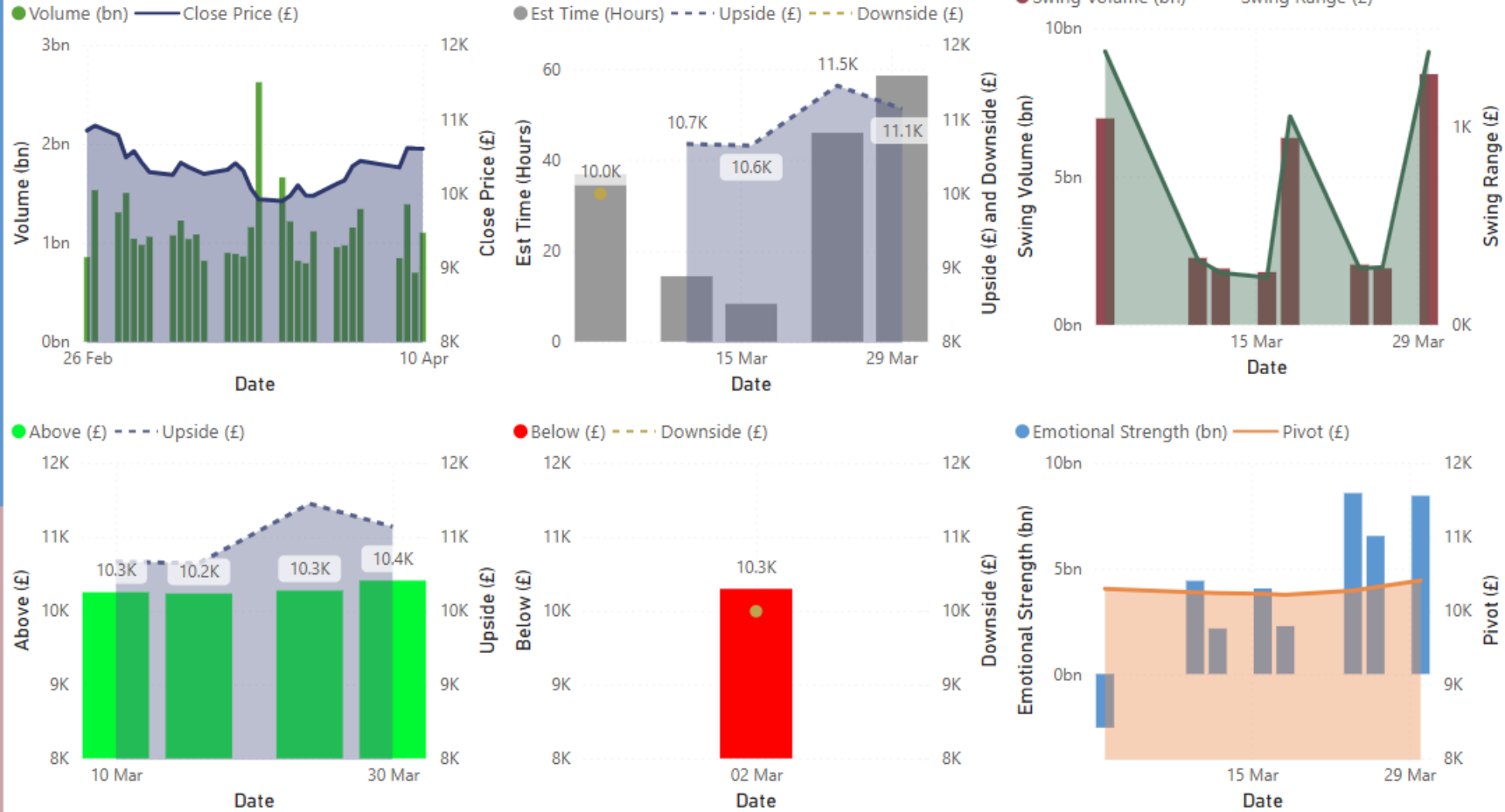
Insights

This dashboard presents structural boundaries, emotional pressure, and behavioral displacement for contextual interpretation of the FTSE 100 index. It integrates volume-price behavior, swing dynamics, pivot structure, and upside-downside displacement derived from the QIM Framework. All values are structural outputs and do not represent trading signals.

Purpose:
To provide a clear, non-directional structural view of FTSE 100 behavior for informed interpretation.

Disclaimer

All values shown are structural-behavioral outputs derived from the QIM Framework for research use only. This dashboard does not provide trading signals, investment advice, or market predictions.



© 2026 QIM Framework — Structural-Behavioral Interpretation for Research Use

“Powered by QIM — Structural-Behavioral Framework for Market Interpretation”

© 2026 QIM Framework. All rights reserved.

Structural-behavioral analytics for independent interpretation.

Date: 13-04-2026

Version: 1.0

DAX Projections Dashboard

Structural-Behavioral Metrics and Volume-Price Interpretation Powered by the QIM Framework

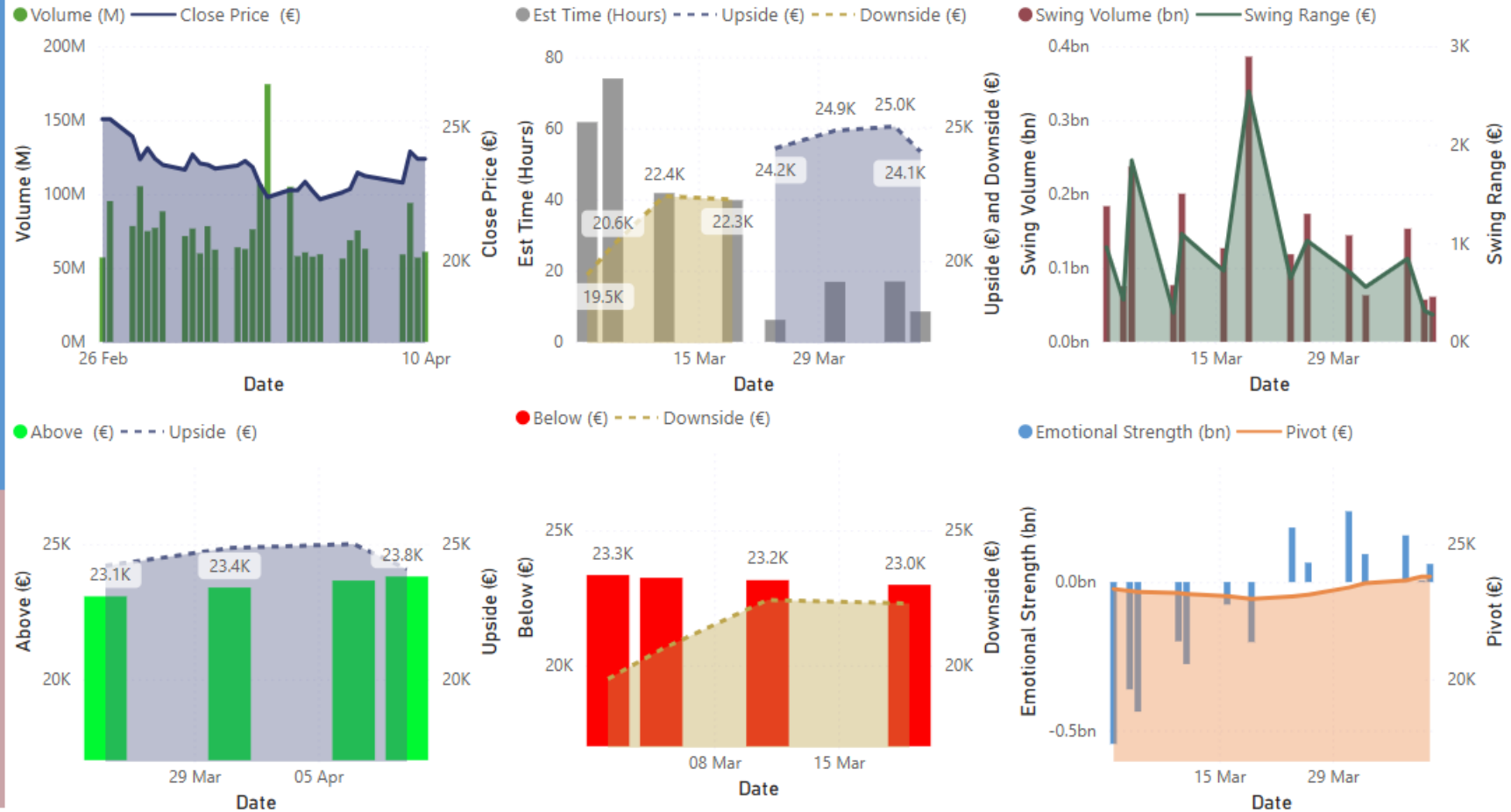
Insights

This dashboard presents structural boundaries, emotional pressure, and behavioral displacement for contextual interpretation of the DAX index. It integrates volume-price behavior, swing dynamics, pivot structure, and upside-downside displacement derived from the QIM Framework. All values are structural outputs and do not represent trading signals.

Purpose:
To provide a clear, non-directional structural view of DAX behavior for informed interpretation.

Disclaimer

All values shown are structural-behavioral outputs derived from the QIM Framework for research use only. This dashboard does not provide trading signals, investment advice, or market predictions.



© 2026 QIM Framework — Structural-Behavioral Interpretation for Research Use

“Powered by QIM — Structural-Behavioral Framework for Market Interpretation”

Hang Sen Projections

Structural-behavioral analytics for independent interpretation.

Date: 13-04-2026

Version: 1.0

Hang Sen Projections Dashboard

Structural-Behavioral Metrics and Volume-Price Interpretation Powered by the QIM Framework

Insights

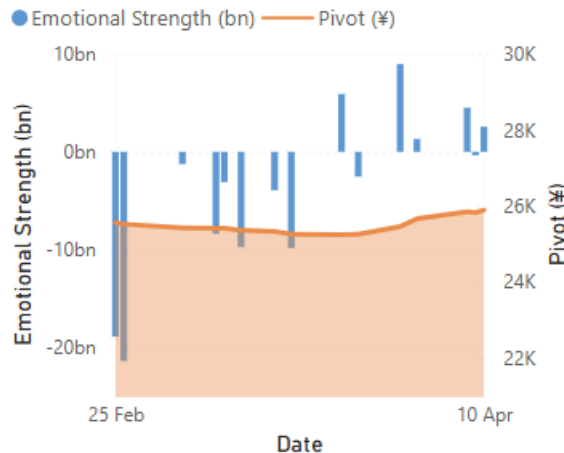
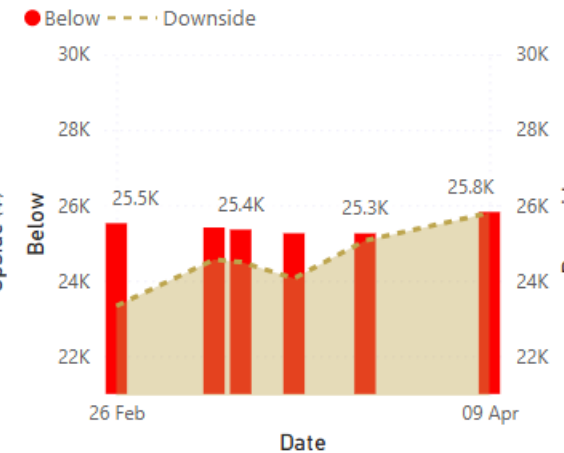
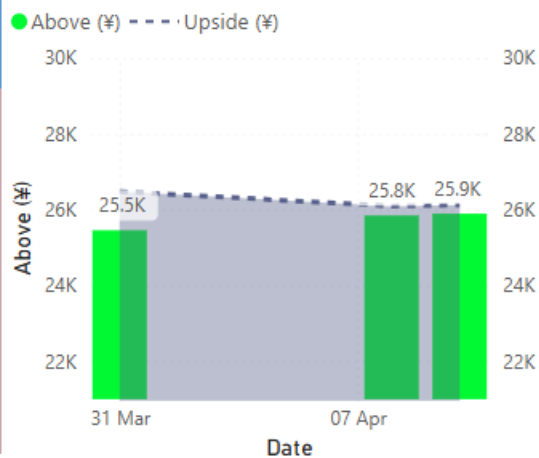
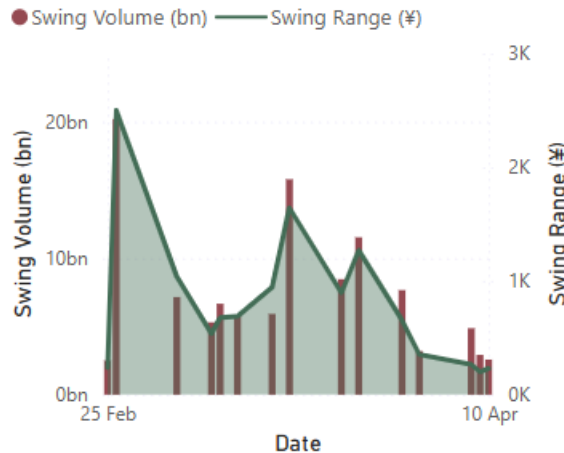
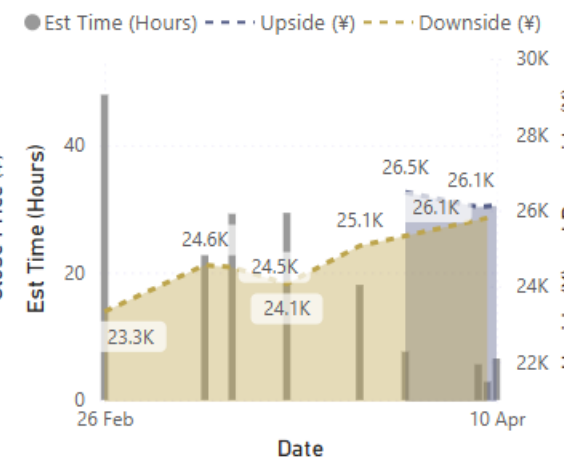
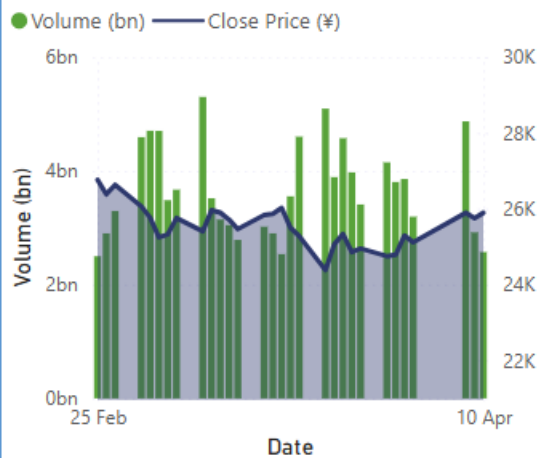
This dashboard presents structural boundaries, emotional pressure, and behavioral displacement for contextual interpretation of the Hang Sen index. It integrates volume-price behavior, swing dynamics, pivot structure, and upside-downside displacement derived from the QIM Framework. All values are structural outputs and do not represent trading signals.

Purpose:

To provide a clear, non-directional structural view of Hang Sen behavior for informed interpretation.

Disclaimer

All values shown are structural-behavioral outputs derived from the QIM Framework for research use only. This dashboard does not provide trading signals, investment advice, or market predictions.



© 2026 QIM Framework — Structural-Behavioral Interpretation for Research Use

“Powered by QIM — Structural-Behavioral Framework for Market Interpretation”

© 2026 QIM Framework. All rights reserved.

Structural-behavioral analytics for independent interpretation.

Date: 13-04-2026

Version: 1.0

Nikkei Projections Dashboard

Structural-Behavioral Metrics and Volume-Price Interpretation Powered by the QIM Framework

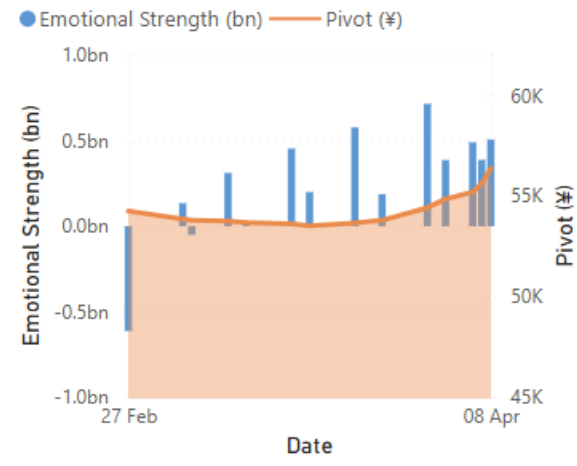
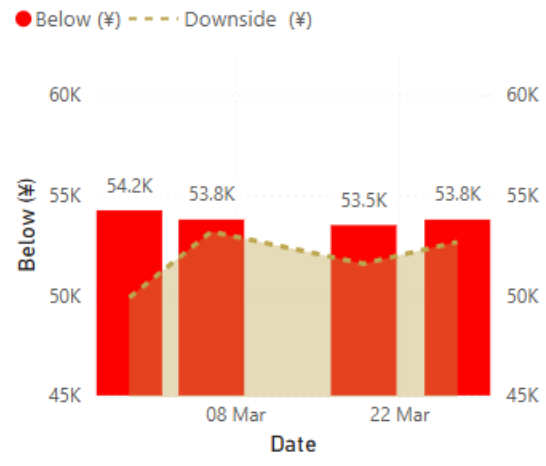
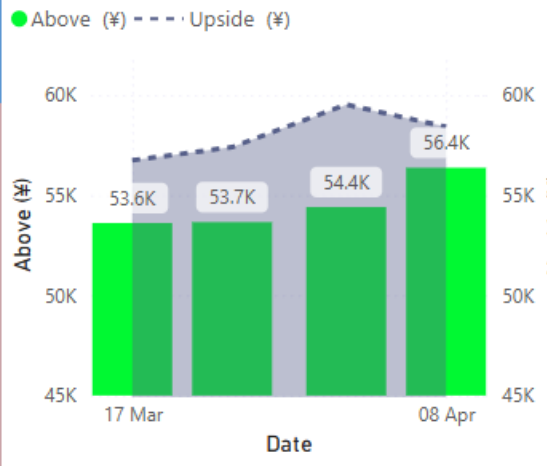
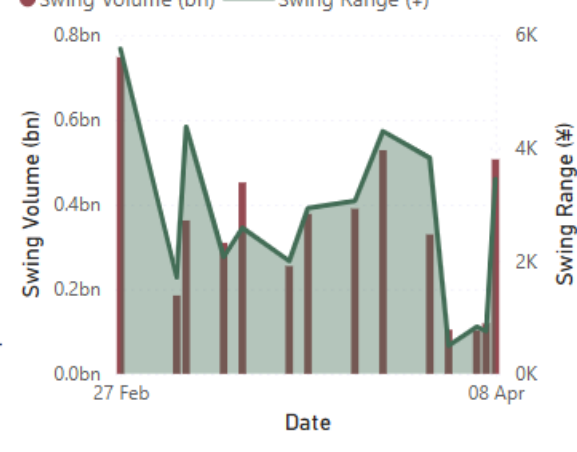
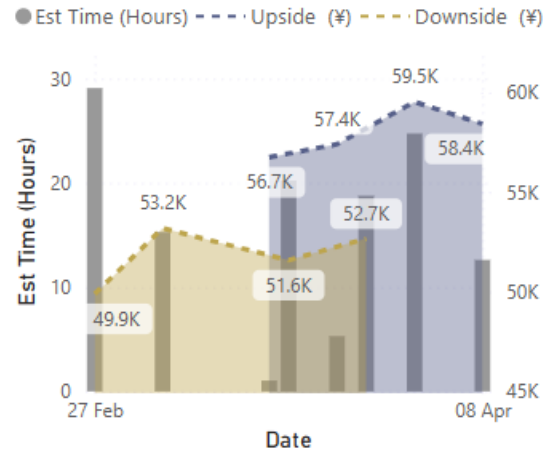
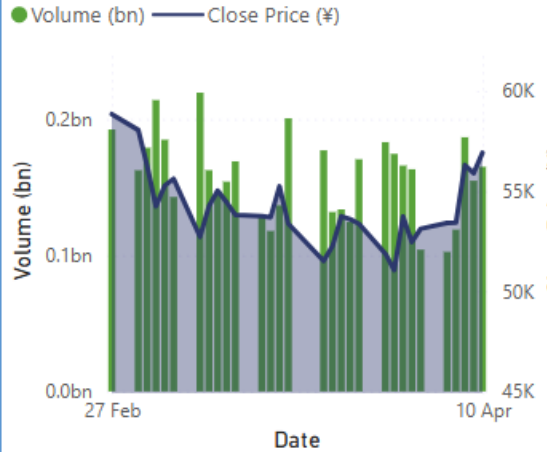
Insights

This dashboard presents structural boundaries, emotional pressure, and behavioral displacement for contextual interpretation of the Nikkei 225 index. It integrates volume-price behavior, swing dynamics, pivot structure, and upside-downside displacement derived from the QIM Framework. All values are structural outputs and do not represent trading signals.

Purpose:
To provide a clear, non-directional structural view of Nikkei 225 behavior for informed interpretation.

Disclaimer

All values shown are structural-behavioral outputs derived from the QIM Framework for research use only. This dashboard does not provide trading signals, investment advice, or market predictions.



© 2026 QIM Framework — Structural-Behavioral Interpretation for Research Use

“Powered by QIM — Structural-Behavioral Framework for Market Interpretation”

© 2026 QIM Framework. All rights reserved.

Structural-behavioral analytics for independent interpretation.

Date: 13-04-2026

Version: 1.0

Insights

This dashboard presents structural boundaries, emotional pressure, and behavioral displacement for contextual interpretation of the ASX 200 index. It integrates volume-price behavior, swing dynamics, pivot structure, and upside-downside displacement derived from the QIM Framework. All values are structural outputs and do not represent trading signals.

Purpose:

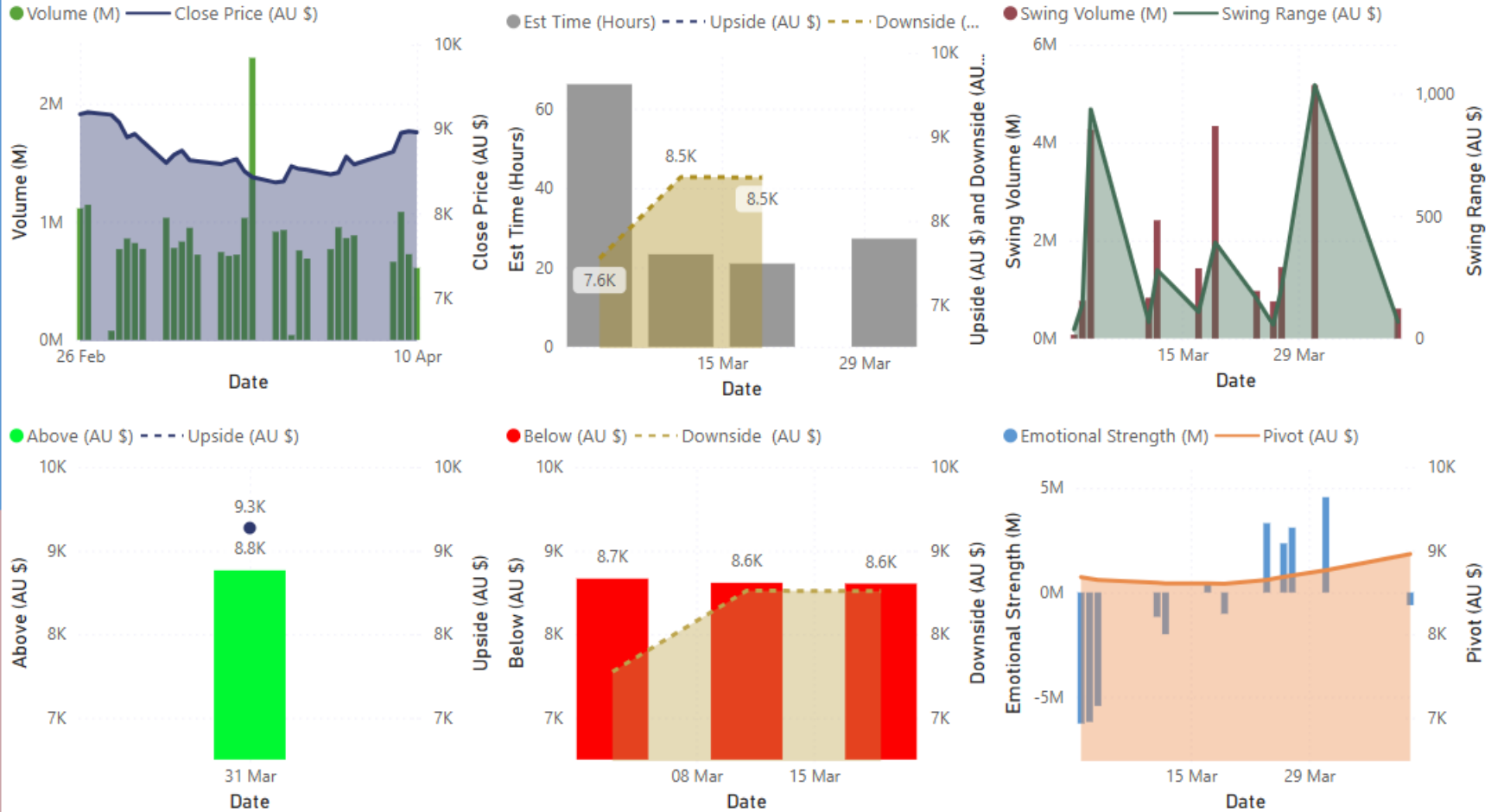
To provide a clear, non-directional structural view of ASX 200 behavior for informed interpretation.

Disclaimer

All values shown are structural-behavioral outputs derived from the QIM Framework for research use only. This dashboard does not provide trading signals, investment advice, or market predictions.

ASX 200 Projections Dashboard

Structural-Behavioral Metrics and Volume-Price Interpretation Powered by the QIM Framework



© 2026 QIM Framework — Structural-Behavioral Interpretation for Research Use

“Powered by QIM — Structural-Behavioral Framework for Market Interpretation”

© 2026 QIM Framework. All rights reserved.

INTERPRETATION NOTE

- QIM FRAMEWORK PRESENTS STRUCTURAL-BEHAVIORAL DATA WITHOUT PRESCRIBING DIRECTIONAL CONCLUSIONS.
- MARKET BEHAVIOR EVOLVES CONTINUOUSLY, AND INTERPRETATION IS THEREFORE LEFT TO THE USER BASED ON CONTEXT, EXPERIENCE, AND SITUATIONAL AWARENESS.





DISCLAIMER 1

1. Structural-Behavioral Use

All values are structural-behavioral outputs from the QIM Framework for research use only. This presentation does not provide trading signals, investment advice, or market predictions.

2. Data & Interpretation

Market data is sourced from public providers and processed through the QIM Framework. The content is informational and should not be used as the basis for financial decisions.

3. Non-Predictive Framework

Charts and metrics shown are non-predictive structural assessments. They support contextual understanding and do not constitute financial guidance or recommendations.

4. Accuracy & Responsibility

Data may contain delays or inaccuracies from external sources. QIM outputs are analytical transformations and should be independently verified before any financial action.

5. Research-Only Scope

This presentation is intended for research and educational purposes within the QIM Framework. It does not offer forecasts, trading strategies, or investment advice.

DISCLAIMER 2



I AM AN INDEPENDENT
DATA ANALYST



I am not a SEBI -registered
analyst or Advisor.



The results presented in the
slides are the output of the
quantum calculator, which is
a quantum interpretive
model(QIM).



THE SLIDES DO NOT
CONTAIN ANY BUY OR SELL
RECOMMENDATIONS,
ADVICE OR COMMENTARY.



The information presented in
the slides is for Educational
purposes only. For Informed
decision making, contact
your SEBI - registered
Analyst/Advisor.

CONTACT



EMAIL –
ASHWIN@QIMFRAMEWORK.COM



MOBILE: +91-8925754190



WEBSITE: QIMFRAMEWORK.COM