

Nifty Projections

Structural-behavioral analytics for independent interpretation.

Date: 13-04-2026

Version: 2.0

QIM Nifty 50 Insights

This dashboard presents structural boundaries, emotional pressure, and behavioral displacement for informed interpretation.

All values are derived from the QIM Framework and do not represent trading signals.

110.00

FFM. Cap (Lakhs Crores) ₹

43

Advance

7

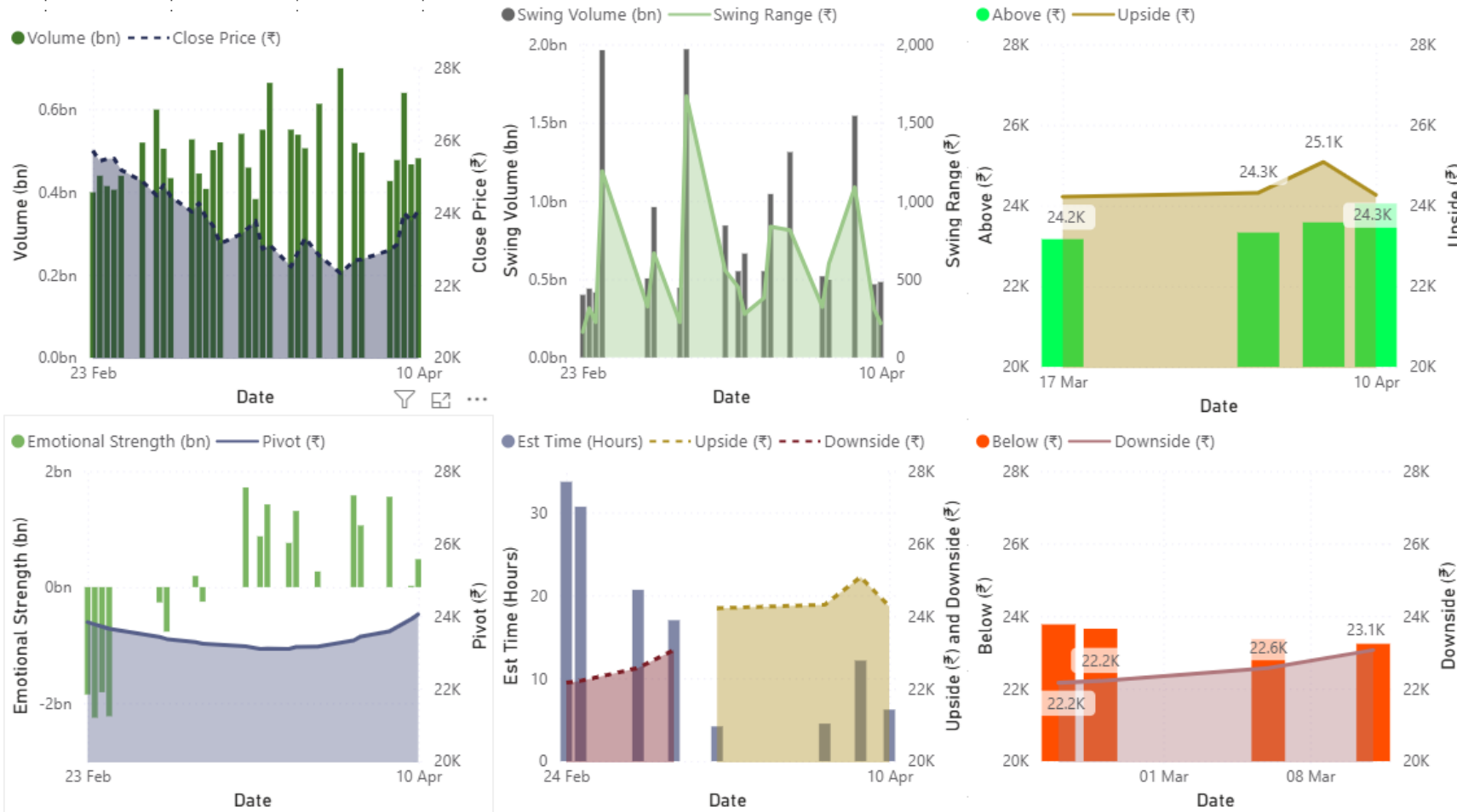
Decline

0

Unchanged

QIM Nifty 50 Dashboard

Structural projections and behavioral interpretation powered by the QIM framework.



© 2026 QIM Framework — Structural-Behavioral Interpretation for Research Use

INTERPRETATION NOTE

- QIM FRAMEWORK PRESENTS STRUCTURAL-BEHAVIORAL DATA WITHOUT PRESCRIBING DIRECTIONAL CONCLUSIONS.
- MARKET BEHAVIOUR EVOLVES CONTINUOUSLY, AND INTERPRETATION IS THEREFORE LEFT TO THE USER BASED ON CONTEXT, EXPERIENCE, AND SITUATIONAL AWARENESS.



DISCLAIMER



I AM AN INDEPENDENT DATA ANALYST



I am not a SEBI-registered analyst or Advisor.



The results presented in the slides are the output of the quantum calculator, which is a quantum interpretive model(QIM).



THE SLIDES DO NOT CONTAIN ANY BUY OR SELL RECOMMENDATIONS, ADVICE OR COMMENTARY.



The information presented in the slides is for Educational purposes only. For Informed decision making, contact your SEBI-registered Analyst/Advisor.

CONTACT



EMAIL – ASHWIN@QIMFRAMEWORK.COM



MOBILE: +91-8925754190



WEBSITE: QIMFRAMEWORK.COM