

# Nifty Projections

Structural-behavioral analytics for independent interpretation.

Date: 20-04-2026  
Version: 3.0

**QIM Nifty 50 Insights**

This dashboard presents structural boundaries, emotional pressure, and behavioral displacement for informed interpretation.

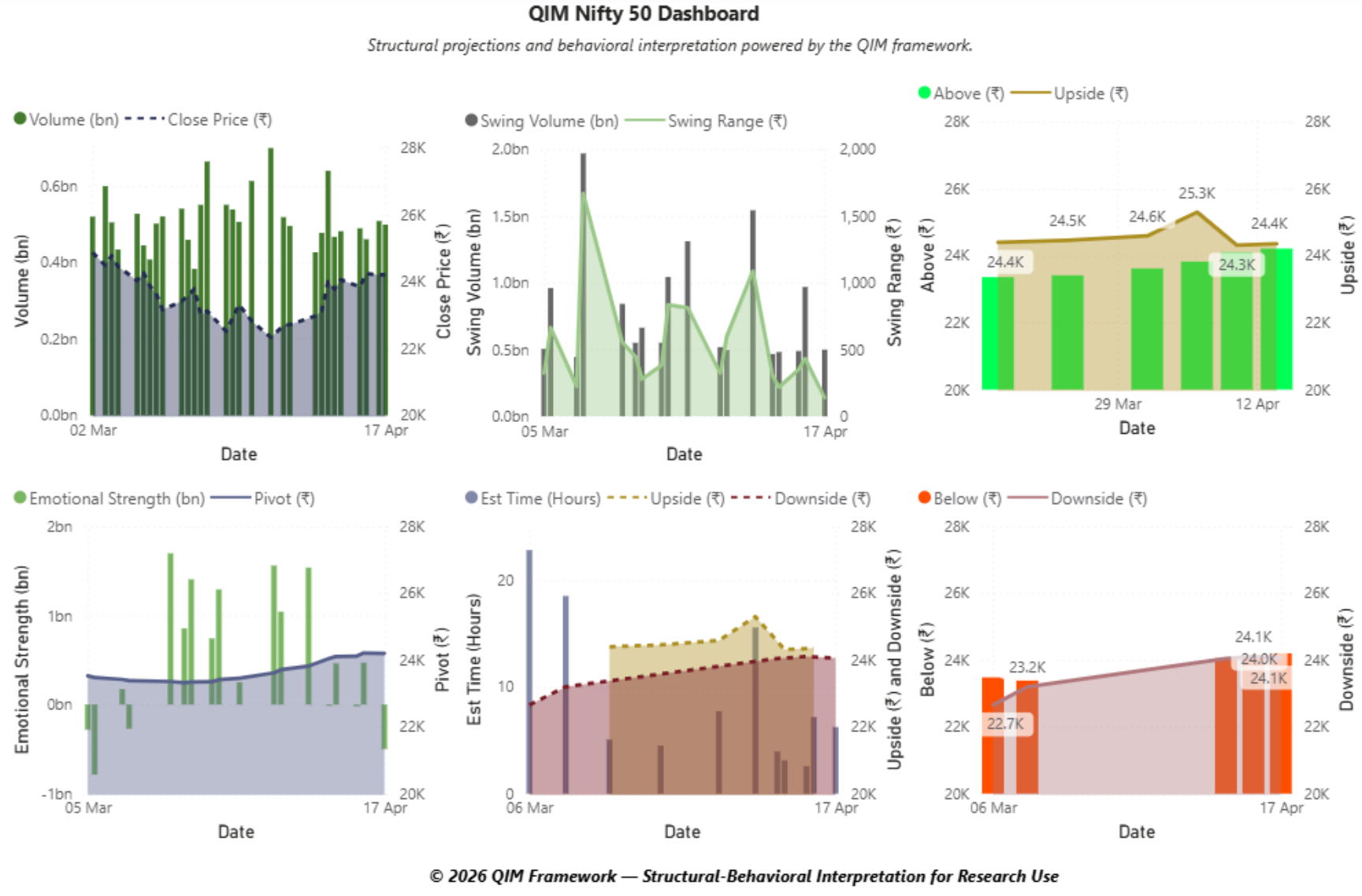
All values are derived from the QIM Framework and do not represent trading signals.

**111.83**  
FFM. Cap (Lakhs Crores) ₹

**40**  
Advance

**10**  
Decline

**0**  
Unchanged



“Powered by QIM — Structural-Behavioral Framework for Market Interpretation”

© 2026 QIM Framework. All rights reserved.

## INTERPRETATION NOTE

- QIM FRAMEWORK PRESENTS STRUCTURAL-BEHAVIORAL DATA WITHOUT PRESCRIBING DIRECTIONAL CONCLUSIONS.
- MARKET BEHAVIOR EVOLVES CONTINUOUSLY, AND INTERPRETATION IS THEREFORE LEFT TO THE USER BASED ON CONTEXT, EXPERIENCE, AND SITUATIONAL AWARENESS.



## DISCLAIMER



I AM AN  
INDEPENDENT DATA  
ANALYST



I am not a SEBI-  
registered analyst or  
Advisor.



The results presented  
in the slides are the  
output of the quantum  
calculator, which is a  
quantum interpretive  
model(QIM).



THE SLIDES DO NOT  
CONTAIN ANY BUY  
OR SELL  
RECOMMENDATIONS,  
ADVICE OR  
COMMENTARY.



The information  
presented in the slides  
is for Educational  
purposes only. For  
Informed decision  
making, contact your  
SEBI-registered  
Analyst/Advisor.

## CONTACT



EMAIL –  
[ASHWIN@QIMFRAMEWORK.COM](mailto:ASHWIN@QIMFRAMEWORK.COM)



MOBILE: +91-8925754190



WEBSITE: [QIMFRAMEWORK.COM](http://QIMFRAMEWORK.COM)