

Structural-behavioral analytics for independent interpretation.

Date: 19-05-2026
Version: 3.0

QIM Nifty 50 Insights

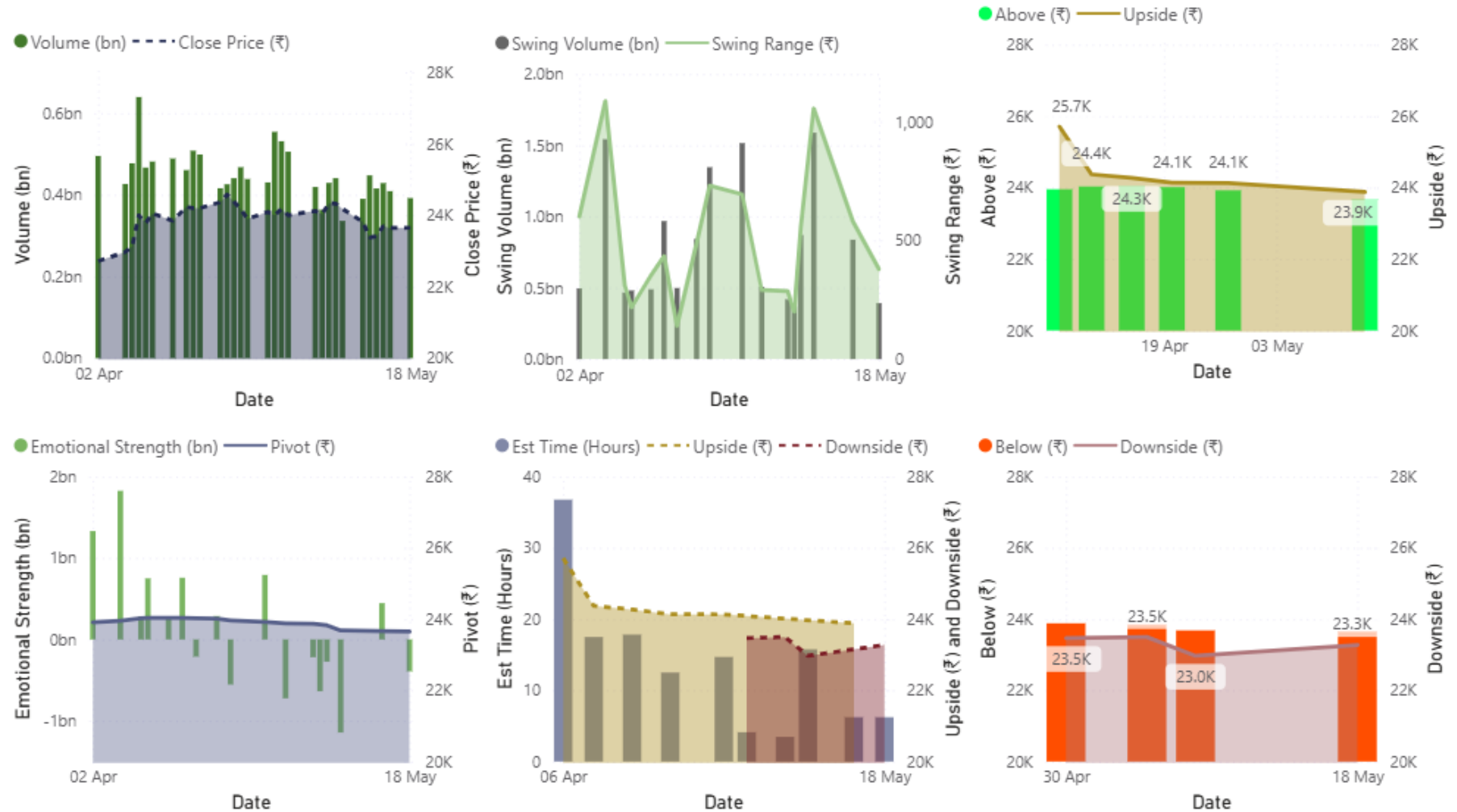
This dashboard presents structural boundaries, emotional pressure, and behavioral displacement for informed interpretation.

All values are derived from the QIM Framework and do not represent trading signals.

108.19
FFM. Cap (Lakhs Crores) ₹
19
Advance
29
Decline
2
Unchanged

QIM Nifty 50 Dashboard

Structural projections and behavioral interpretation powered by the QIM framework.



© 2026 QIM Framework — Structural-Behavioral Interpretation for Research Use

“Powered by QIM — Structural-Behavioral Framework for Market Interpretation”

© 2026 QIM Framework. All rights reserved.

INTERPRETATION NOTE

- QIM FRAMEWORK PRESENTS STRUCTURAL-BEHAVIORAL DATA WITHOUT PRESCRIBING DIRECTIONAL CONCLUSIONS.
- MARKET BEHAVIOR EVOLVES CONTINUOUSLY, AND INTERPRETATION IS THEREFORE LEFT TO THE USER BASED ON CONTEXT, EXPERIENCE, AND SITUATIONAL AWARENESS.



DISCLAIMER



I AM AN
INDEPENDENT DATA
ANALYST



I am not a SEBI-
registered analyst or
Advisor.



The results presented
in the slides are the
output of the quantum
calculator, which is a
quantum interpretive
model(QIM).



THE SLIDES DO NOT
CONTAIN ANY BUY
OR SELL
RECOMMENDATIONS,
ADVICE OR
COMMENTARY.



The information
presented in the slides
is for Educational
purposes only. For
Informed decision
making, contact your
SEBI-registered
Analyst/Advisor.

CONTACT



EMAIL –
ASHWIN@QIMFRAMEWORK.COM



MOBILE: +91-8925754190



WEBSITE: QIMFRAMEWORK.COM